

**CXCR5 Antibody (N-term)**  
**Affinity Purified Rabbit Polyclonal Antibody (Pab)**  
**Catalog # AP19892a****Specification**

---

**CXCR5 Antibody (N-term) - Product Information**

Application	WB,E
Primary Accession	<a href="#">P32302</a>
Other Accession	<a href="#">NP_116743.1</a>
Reactivity	Human
Host	Rabbit
Clonality	Polyclonal
Isotype	Rabbit IgG
Calculated MW	41955
Antigen Region	1-30

**CXCR5 Antibody (N-term) - Additional Information****Gene ID** 643**Other Names**

C-X-C chemokine receptor type 5, CXC-R5, CXCR-5, Burkitt lymphoma receptor 1, Monocyte-derived receptor 15, MDR-15, CD185, CXCR5, BLR1, MDR15

**Target/Specificity**

This CXCR5 antibody is generated from rabbits immunized with a KLH conjugated synthetic peptide between 1-30 amino acids from the N-terminal region of human CXCR5.

**Dilution**

WB~~1:1000

E~~Use at an assay dependent concentration.

**Format**

Purified polyclonal antibody supplied in PBS with 0.09% (W/V) sodium azide. This antibody is purified through a protein A column, followed by peptide affinity purification.

**Storage**

Maintain refrigerated at 2-8°C for up to 2 weeks. For long term storage store at -20°C in small aliquots to prevent freeze-thaw cycles.

**Precautions**

CXCR5 Antibody (N-term) is for research use only and not for use in diagnostic or therapeutic procedures.

**CXCR5 Antibody (N-term) - Protein Information****Name** CXCR5

**Synonyms** BLR1, MDR15

**Function** Cytokine receptor that binds to B-lymphocyte chemoattractant (BLC). Involved in B-cell migration into B-cell follicles of spleen and Peyer patches but not into those of mesenteric or peripheral lymph nodes. May have a regulatory function in Burkitt lymphoma (BL) lymphomagenesis and/or B-cell differentiation.

**Cellular Location**

Cell membrane; Multi-pass membrane protein.

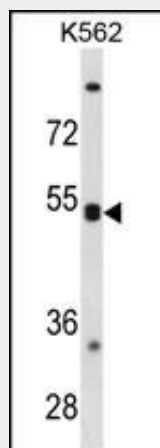
**Tissue Location**

Expression in mature B-cells and Burkitt lymphoma cells

**CXCR5 Antibody (N-term) - Protocols**

Provided below are standard protocols that you may find useful for product applications.

- [Western Blot](#)
- [Blocking Peptides](#)
- [Dot Blot](#)
- [Immunohistochemistry](#)
- [Immunofluorescence](#)
- [Immunoprecipitation](#)
- [Flow Cytometry](#)
- [Cell Culture](#)

**CXCR5 Antibody (N-term) - Images**

CXCR5 Antibody (N-term) (Cat. #AP19892a) western blot analysis in K562 cell line lysates (35ug/lane). This demonstrates the CXCR5 antibody detected the CXCR5 protein (arrow).

**CXCR5 Antibody (N-term) - Background**

This gene was identified as a gene specifically expressed in Burkitt's lymphoma and lymphatic tissues. The protein encoded by this gene is predicted to be a seven transmembrane G protein-coupled receptor and belongs to the CXC chemokine receptor family. BLC, a B-lymphocyte chemoattractant, was identified to be a specific ligand for this receptor. Studies of this gene and its mouse counterpart strongly suggest the essential function of this

gene in B cell migration and localization within specific anatomic compartments, such as follicles in lymph nodes as well as in spleen. Two alternatively spliced variants of this gene exist.

#### **CXCR5 Antibody (N-term) - References**

Bailey, S.D., et al. Diabetes Care 33(10):2250-2253(2010)  
Lee, H.T., et al. J. Rheumatol. 37(1):45-52(2010)  
El Haibi, C.P., et al. Mol. Cancer 9, 85 (2010) :  
Singh, S., et al. Int. J. Cancer 125(10):2288-2295(2009)  
Talmud, P.J., et al. Am. J. Hum. Genet. 85(5):628-642(2009)

#### **CXCR5 Antibody (N-term) - Citations**

- [CXCL13 inhibition induce the apoptosis of MDA-MB-231 breast cancer cells through blocking CXCR5/ERK signaling pathway.](#)